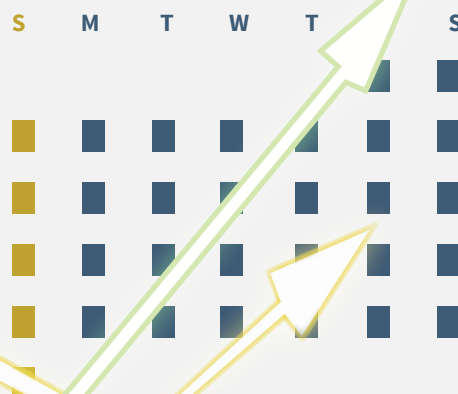




Central Bank of Kenya

# Monthly Economic Indicators

January 2021



---

## TABLE OF CONTENTS

	<b>SYMBOLS</b> .....	<b>3</b>
	<b>DEFINITIONS</b> .....	<b>4</b>
<b>1.</b>	<b>INFLATION</b> .....	<b>6</b>
<b>2.</b>	<b>MONEY, CREDIT AND INTEREST RATES</b> .....	<b>9</b>
<b>3.</b>	<b>REAL SECTOR INDICATORS</b> .....	<b>12</b>
<b>4.</b>	<b>BALANCE OF PAYMENTS AND EXTERNAL SECTOR INDICATORS</b> .....	<b>13</b>
<b>5.</b>	<b>DEVELOPMENTS IN THE BANKING SECTOR.</b> .....	<b>16</b>
<b>6.</b>	<b>GOVERNMENT BUDGETARY OPERATIONS</b> .....	<b>17</b>
<b>7.</b>	<b>PUBLIC DEBT</b> .....	<b>20</b>
<b>8.</b>	<b>CAPITAL MARKETS INDICATORS</b> .....	<b>22</b>

---

## SYMBOLS

- Not applicable
- Not available
- Magnitude zero or insignificant
- \* Provisional or estimated figure
- \*\* Revised figure

---

## DEFINITIONS

1. **Inflation:** Percentage change in the consumer price index (CPI)
2. **Narrow Money**  
**M0:** Currency outside the banking system excluding commemorative coins  
**M1:** M0 + demand deposits of banks (or depository corporations)
3. **Broad Money**  
**M2:** M1 + quasi (long term) money deposits i.e. time and savings deposits of banks.
4. **Extended Broad Money**  
**M3:** M2 + resident foreign currency deposits.
5. **Overall Liquidity**  
**L:** M3 + non-bank holdings of Government securities.
6. **Net Foreign Assets (NFA):** Gross foreign assets less gross foreign liabilities of depository corporations (DCs).
7. **Net Domestic Assets (NDA) of Depository Corporations (DCs):** the sum of:
  - Net credit to Government, which is the sum of net credit to government from the central bank (CBK) and commercial banks.
  - Credit to other sectors, which is the sum of credit to other sectors (private and other public entities) from central bank and from other depository corporations (ODCs).
  - Other Items Net (Other assets less other liabilities) of central bank and ODCs after netting out positions between CBK and ODCs or consolidation adjustments.
8. **NFA + NDA = Extended Broad Money**
9. **Credit to Private Sector:** Credit facilities extended by DCs to the private sector.
10. **Interest Rates:** Covers the short term rates including: Repo rate (3 and 7 days), reverse repo, interbank rates, treasury bill rates and commercial banks' weighted average lending and deposit rates.
11. **Current Account Balance:** Measures the flows of goods, services, primary income, and secondary income between residents and nonresidents.
12. **Capital Account:** Measures capital transfers receivable and payable; and acquisition and disposal of non-produced, non-financial assets, which include: marketing assets; contracts, leases, and licenses; and rights of natural resources such as land, minerals, water, air space between residents and nonresidents.

- 
13. **Financial Account:** Measures net acquisition of financial assets and incurrences of financial liabilities.
  14. **Exchange Rate:** The price of Kenya Shilling relative to a foreign currency. The mean exchange rate is computed by a simple average of the mean buying and selling exchange rate prevailing on any trading day.
  15. **Foreign Exchange Reserves:** External assets held by the CBK that are readily available for meeting balance of payments financing needs and for intervention in the foreign exchange market.
  16. **Government Revenue:** Comprises tax and non-tax revenue. Tax revenue includes import duty, excise duty, income tax (including PAYE) and value added tax (VAT) while non-tax revenue comprises investment income, appropriation in aid (AIA) and other levies.
  17. **Grants:** Non repayable funds received by the Government from other governments or international organizations.
  18. **Government Expenditures:** Both recurrent and development expenditures. Recurrent expenditures refer to spending on current activities. It consists of interest payments on debt (domestic and foreign), salaries and wages, pensions and payments for maintenance and operations. Development expenditure refers to the expenditure incurred on projects.
  19. **Budget Deficit:** the excess of expenditure over revenue and grants. The converse is a budget surplus.
  20. **Deficit financing:** Comprising external borrowing, domestic borrowing and sales of Government shares in government agencies (privatisation).
  21. **Public and Publicly Guaranteed Debt:** Comprises external and domestic debt owed or guaranteed by the Government.

## 1. INFLATION

**Table 1.1 : Monthly Trends in Inflation (Per cent)**

	Overall 12 months inflation	Food Inflation	Fuel Inflation	Non-Food Non-Fuel Inflation (NFNF)	Average Annual	Three months annualised
February	7.17	15.67	5.44	2.28	6.74	7.84
March	5.84	12.34	4.45	1.95	5.34	6.02
April	6.01	12.46	4.93	1.96	5.52	7.66
May	5.33	10.37	5.05	1.76	5.73	5.44
June	4.59	8.15	5.45	1.65	5.76	2.98
July	4.36	6.62	8.69	1.63	5.63	-0.52
August	4.36	5.43	10.85	1.87	5.49	-0.11
September	4.20	5.18	10.90	1.75	5.43	1.13
October	4.84	5.76	12.15	2.30	5.26	4.70
November	5.33	6.09	11.00	2.66	5.07	8.38
December	5.62	7.19	11.30	2.63	4.92	12.70
<b>2021</b>						
January	5.69	7.36	12.09	2.36		11.29

The Kenya National Bureau of statistics (KNBS) revised the inflation basket in February 2020 with the base period changing from February 2009 to February 2019. The previous CPI basket of 234 items was revised to 330 items, and an additional category known as 'Financial and Insurance services' was included in the basket. 'Miscellaneous goods and services' category was revised to 'Personal Care, Social Protection and Miscellaneous Goods & Services' category.

Food inflation comprise "food and non-alcoholic beverages" categories of the CPI basket; and fuel inflation comprise "transport" and "housing, water, electricity, gas and other fuels" categories of the CPI basket; NFNF excludes food and fuel inflation

*Source: Kenya National Bureau of Statistics and Central Bank of Kenya*

## INFLATION

**Table 1.2: 12-Month Inflation Across Categories**

	Food & Non-Alcoholic Beverages	Alcoholic Beverages, Tobacco & Narcotics	Clothing & Footwear	Housing, Water, Electricity, Gas and Other Fuels	Furnishings, Household Equipment and Routine Household Maintenance	Health	Transport	Information & Communication	Recreation, Sports & Culture	Education Services	Restaurants & Accommodation Services	Insurance and Financial Services	Personal Care, Social Protection and Miscellaneous Goods & Services	Overall Inflation
<b>2020</b>														
February	15.67	8.83	2.83	2.50	2.32	1.43	4.89	0.99	1.88	1.25	2.54	0.73	3.01	7.17
March	12.34	8.15	2.26	2.40	1.88	1.20	3.73	0.71	1.61	1.07	2.14	0.59	2.43	5.84
April	12.46	8.52	2.08	2.54	1.80	1.31	4.32	0.71	1.32	1.08	2.30	0.66	2.30	6.01
May	10.37	7.74	2.51	2.57	1.94	1.21	5.13	0.39	1.36	1.05	2.01	0.62	1.87	5.33
June	8.15	6.79	2.62	1.41	1.33	1.13	6.89	-0.04	2.96	1.13	1.91	0.58	1.82	4.59
July	6.62	5.90	2.08	1.06	1.12	1.79	11.12	0.09	2.81	1.94	1.52	0.56	2.11	4.36
August	5.43	5.03	2.03	2.11	1.20	2.31	13.07	0.80	2.88	1.63	2.85	0.42	2.15	4.36
September	5.18	4.33	1.78	2.18	1.40	1.77	12.95	0.32	2.86	1.56	2.78	0.14	2.00	4.20
October	5.76	4.19	2.49	2.82	2.18	3.04	13.54	0.42	2.94	1.86	4.14	1.30	2.12	4.84
November	6.09	3.61	3.26	2.65	2.50	4.17	12.87	1.02	2.97	2.22	5.23	1.41	2.31	5.33
December	7.19	3.66	2.42	3.07	2.88	4.53	13.21	0.92	3.05	2.44	5.48	1.29	2.19	5.62
<b>2021</b>														
January	7.36	2.72	2.26	3.09	3.19	4.45	14.24	0.80	2.91	1.86	5.36	1.45	2.03	5.69

The Kenya National Bureau of statistics (KNBS) revised the inflation basket in February 2020 with the base period changing from February 2009 to February 2019. The previous CPI basket of 234 items was revised to 330 items, and an additional category known as 'Financial and Insurance services' was included in the basket. 'Miscellaneous goods and services' category was revised to 'Personal Care, Social Protection and Miscellaneous Goods & Services' category.

Contribution to overall inflation is provided upto January 2020. From February 2020, inflation rates across categories are provided.

**Source: Kenya National Bureau of Statistics and Central Bank of Kenya**

## INFLATION

**Table 1.3: Overall Inflation across Income Groups in Nairobi (Per cent)**

	Nairobi Upper Income	Nairobi Middle Income	Nairobi Lower Income	Nairobi Combined
<b>2020</b>				
February	3.41	3.34	8.36	6.16
March	2.89	3.29	6.90	5.28
April	2.90	3.40	6.77	5.25
May	2.67	2.68	6.08	4.61
June	2.29	2.79	5.42	4.23
July	2.01	1.84	5.44	3.90
August	2.68	1.79	5.30	3.88
September	2.29	1.67	5.26	3.77
October	2.57	2.31	5.24	4.01
November	2.28	2.32	5.26	3.99
December	2.38	2.86	6.08	4.64
<b>2021</b>				
January	2.91	3.11	5.70	4.57

Source: Kenya National Bureau of Statistics

**Table 1.4: Overall Inflation by Region (Per cent)**

	Nairobi	Rest of Kenya	Kenya
February	6.16	7.89	7.17
March	5.28	6.24	5.84
April	5.25	6.55	6.01
May	4.61	5.84	5.33
June	4.23	4.84	4.59
July	3.90	4.68	4.36
August	3.88	4.69	4.36
September	3.77	4.50	4.20
October	4.01	5.43	4.84
November	3.99	6.28	5.33
December	4.64	6.30	5.62
<b>2021</b>			
January	4.57	6.48	5.69

The Kenya National Bureau of statistics (KNBS) revised the inflation basket in February 2020 with the base period changing from February 2009 to February 2019. The previous CPI basket of 234 items was revised to 330 items, and an additional category known as 'Financial and Insurance services' was included in the basket. 'Miscellaneous goods and services' category was revised to 'Personal Care, Social Protection and Miscellaneous Goods & Services' category.

Source: Kenya National Bureau of Statistics



## 2. MONEY, CREDIT AND INTEREST RATES

Table 2.1: Money Supply and its Sources (KSh Billion)

COMPONENTS OF M3	Jan-20*	Feb-20	Mar-20	Apr-20	May-20	Jun-20	Jul-20	Aug-20	Sep-20	Oct-20	Nov-20	Dec-20	Jan-21
<b>1. Money supply, M1 (1.1+1.2+1.3)</b>	<b>1,524.0</b>	<b>1,568.1</b>	<b>1,595.1</b>	<b>1,595.3</b>	<b>1,602.1</b>	<b>1,666.6</b>	<b>1,683.6</b>	<b>1,655.7</b>	<b>1,665.8</b>	<b>1,742.0</b>	<b>1,759.9</b>	<b>1,720.3</b>	<b>1,716.4</b>
1.1 Currency outside banks	192.4	195.1	198.3	194.2	197.9	210.9	219.1	217.8	217.6	223.0	224.9	233.7	226.7
1.2 Demand deposits	1,249.1	1,283.2	1,306.2	1,299.7	1,293.7	1,349.9	1,379.1	1,344.1	1,371.0	1,417.5	1,448.7	1,386.0	1,380.1
1.3 Other deposits at CBK <sup>1</sup>	82.6	89.8	90.7	101.3	110.5	105.8	85.4	93.8	77.2	101.4	86.3	100.7	109.5
<b>2. Money supply, M2 (1+2.1)</b>	<b>2,915.7</b>	<b>2,970.1</b>	<b>3,018.9</b>	<b>3,038.7</b>	<b>3,081.3</b>	<b>3,201.3</b>	<b>3,236.7</b>	<b>3,182.8</b>	<b>3,180.5</b>	<b>3,223.5</b>	<b>3,238.2</b>	<b>3,250.2</b>	<b>3,236.9</b>
2.1 Time and saving deposits	1,391.7	1,402.0	1,423.7	1,443.4	1,479.2	1,534.7	1,553.2	1,527.0	1,514.7	1,481.6	1,478.3	1,529.9	1,520.5
<b>3. Money supply, M3 (2+3.1)</b>	<b>3,527.0</b>	<b>3,596.0</b>	<b>3,661.0</b>	<b>3,696.0</b>	<b>3,752.8</b>	<b>3,863.6</b>	<b>3,905.4</b>	<b>3,847.0</b>	<b>3,843.5</b>	<b>3,922.7</b>	<b>3,952.3</b>	<b>3,990.9</b>	<b>3,992.9</b>
3.1 Foreign Currency Deposits	611	626	642	657	671	662	669	664	663	699	714	741	756
<b>SOURCES OF M3</b>													
<b>1. Net foreign assets <sup>2</sup></b>	<b>774.2</b>	<b>784.5</b>	<b>767.7</b>	<b>762.6</b>	<b>852.0</b>	<b>885.4</b>	<b>837.4</b>	<b>802.8</b>	<b>749.1</b>	<b>748.0</b>	<b>730.6</b>	<b>746.4</b>	<b>750.6</b>
1.1 Central Bank	800.8	792.2	800.6	794.6	862.1	918.1	883.5	842.9	804.9	762.3	753.6	738.5	724.8
1.2 Banking Institutions	-26.6	-7.7	-32.9	-32.0	-10.1	-32.7	-46.0	-40.1	-55.8	-14.2	-23.0	7.9	25.8
<b>2. Net domestic assets (2.1+2.2)</b>	<b>2,752.8</b>	<b>2,811.6</b>	<b>2,893.3</b>	<b>2,933.4</b>	<b>2,900.8</b>	<b>2,978.2</b>	<b>3,068.0</b>	<b>3,044.2</b>	<b>3,094.4</b>	<b>3,174.7</b>	<b>3,221.7</b>	<b>3,244.5</b>	<b>3,242.2</b>
2.1 Domestic credit	3,684.3	3,756.1	3,789.0	3,839.9	3,819.6	3,905.7	3,989.7	4,026.4	4,053.3	4,149.4	4,235.9	4,247.6	4,279.4
2.1.1 Government (net)	992.9	1,052.1	1,036.8	1,063.3	1,047.1	1,122.3	1,172.1	1,187.5	1,196.0	1,280.6	1,332.3	1,343.3	1,345.9
2.1.2 Private sector	2,598.7	2,613.0	2,661.2	2,684.4	2,678.8	2,695.0	2,728.8	2,751.8	2,768.6	2,779.6	2,812.8	2,813.1	2,841.6
2.1.3 Other public sector	92.6	91.0	90.9	92.2	93.7	88.4	88.8	87.1	88.7	89.1	90.8	91.2	91.9
2.2 Other items net	-931.4	-944.5	-895.6	-906.5	-918.8	-927.5	-921.7	-982.2	-958.9	-974.6	-1,014.2	-1,003.1	-1,037.2
<b>Memorandum items</b>													
1. Reserve money	441.3	449.7	445.5	435.8	432.1	426.9	461.9	476.5	452.2	445.0	461.3	469.9	442.3
Bank reserves	249.0	254.6	247.3	241.5	234.3	216.0	242.8	258.7	234.6	221.9	236.4	236.2	215.5
2. Overall liquidity, L (3+2.1.0)	4,957.8	5,051.7	5,180.2	5,227.1	5,311.1	5,416.1	5,514.2	5,508.9	5,519.8	5,615.4	5,673.5	5,742.7	5,764.8
2.1.0 Non-bank holdings of government securities	1,430.8	1,455.6	1,519.2	1,531.1	1,558.3	1,552.4	1,608.7	1,662.0	1,676.3	1,692.7	1,721.2	1,751.8	1,771.9
<b>ANNUAL GROWTH RATE (Per cent)</b>													
<b>COMPONENTS OF M3</b>													
<b>1. Money supply, M1 (1.1+1.2+1.3)</b>	<b>4.1</b>	<b>7.3</b>	<b>4.9</b>	<b>6.2</b>	<b>7.1</b>	<b>5.8</b>	<b>11.4</b>	<b>12.7</b>	<b>14.1</b>	<b>17.8</b>	<b>20.5</b>	<b>12.8</b>	<b>12.6</b>
1.1 Currency outside banks	-10.2	-9.8	-12.0	-12.5	-10.9	7.1	16.3	17.0	38.0	26.1	17.4	17.7	17.9
1.2 Demand deposits	8.1	10.6	8.0	9.8	8.7	11.3	11.8	10.4	15.2	16.5	22.1	10.6	10.5
1.3 Other deposits at CBK <sup>1</sup>	-12.8	5.9	5.2	6.0	32.6	-36.2	-4.0	43.7	-30.8	19.0	4.5	37.2	32.6
<b>2. Money supply, M2 (1+2.1)</b>	<b>5.7</b>	<b>8.1</b>	<b>6.4</b>	<b>7.5</b>	<b>8.6</b>	<b>8.7</b>	<b>11.9</b>	<b>11.4</b>	<b>11.0</b>	<b>11.5</b>	<b>13.6</b>	<b>11.9</b>	<b>11.0</b>
2.1 Time and saving deposits	7.6	8.9	8.0	9.0	10.2	12.2	12.4	10.0	7.7	4.8	6.4	10.9	9.3
<b>3. Money supply, M3 (2+3.1)</b>	<b>5.5</b>	<b>7.9</b>	<b>7.2</b>	<b>8.6</b>	<b>9.9</b>	<b>8.4</b>	<b>11.3</b>	<b>11.0</b>	<b>10.7</b>	<b>11.5</b>	<b>14.2</b>	<b>13.2</b>	<b>13.2</b>
3.1 Foreign Currency Deposits	4.2	7.0	11.3	13.5	16.2	6.7	8.4	9.2	9.1	11.8	16.6	19.5	23.7
<b>SOURCES OF M3</b>													
<b>1. Net foreign assets <sup>2</sup></b>	<b>9.6</b>	<b>10.3</b>	<b>6.6</b>	<b>2.5</b>	<b>-8.8</b>	<b>-5.8</b>	<b>-7.0</b>	<b>-7.6</b>	<b>-10.3</b>	<b>-12.7</b>	<b>-8.2</b>	<b>-7.2</b>	<b>-3.0</b>
1.1 Central Bank	6.9	6.2	7.1	7.0	-9.6	-2.4	-4.5	-5.5	-7.6	-11.4	-10.2	-11.4	-9.5
1.2 Banking Institutions	-37.6	-77.6	19.6	-2,213.9	-46.6	2,906.6	85.6	71.2	54.7	225.6	-47.5	-127.4	-197.1
<b>2. Net domestic assets (2.1+2.2)</b>	<b>4.4</b>	<b>7.2</b>	<b>7.3</b>	<b>10.3</b>	<b>16.9</b>	<b>13.5</b>	<b>17.6</b>	<b>17.2</b>	<b>17.3</b>	<b>19.3</b>	<b>20.8</b>	<b>19.3</b>	<b>17.8</b>
2.1 Domestic credit	7.9	10.5	8.0	9.5	13.9	11.9	14.0	14.6	13.6	15.2	17.5	17.0	16.2
2.1.1 Government (net)	11.2	20.5	7.5	12.7	35.1	26.0	33.9	36.1	33.7	39.0	47.4	42.5	35.5
2.1.2 Private sector	7.3	7.7	8.9	9.0	8.2	7.7	7.9	8.3	7.6	7.7	8.1	8.4	9.3
2.1.3 Other public sector	-7.7	-10.1	-8.8	-7.6	-7.8	-8.3	-7.7	-11.7	-11.2	-10.6	-9.9	-1.2	-0.7
2.2 Other items net	19.9	21.4	10.2	7.1	5.5	7.1	3.4	7.3	3.3	3.5	8.0	10.2	11.4
<b>Memorandum items</b>													
1. Reserve money	-3.6	2.3	-2.4	-4.0	-11.0	-2.9	9.1	13.2	10.9	7.8	8.0	1.9	0.2
Bank reserves	2.1	14.1	6.9	4.2	-11.1	-11.0	3.4	10.1	-6.2	-5.9	0.4	-10.0	-13.4
2. Overall liquidity, L (3+2.1.0)	7.9	9.2	10.3	10.9	11.8	10.6	13.4	13.8	13.5	14.4	16.7	16.6	16.3
2.1.0 Non-bank holdings of government securities	14.4	12.7	18.5	17.1	16.8	16.6	18.7	20.7	20.5	21.8	22.9	25.0	23.8

Absolute and percentage changes may not necessarily add up due to rounding

<sup>1</sup> Includes county deposits and special projects deposit

<sup>2</sup> Net Foreign Assets of CBK excludes Government accounts with IMF

Source: Central Bank of Kenya

## MONEY, CREDIT AND INTEREST RATES

Table 2.2: Banking System Net Domestic Credit (KSh Billion)

	Jan-20*	Feb-20*	Mar-20	Apr-20*	May-20	Jun-20*	Jul-20	Aug-20*	Sep-20	Oct-20	Nov-20	Dec-20	Jan-21
<b>1. Net Credit to Government</b>	<b>992.9</b>	<b>1,052.1</b>	<b>1,036.8</b>	<b>1,063.3</b>	<b>1,047.1</b>	<b>1,122.3</b>	<b>1,172.1</b>	<b>1,187.5</b>	<b>1,196.0</b>	<b>1,280.6</b>	<b>1,332.3</b>	<b>1,343.3</b>	<b>1,345.9</b>
Central Bank	-185.6	-158.9	-118.7	-120.5	-149.9	-89.2	-138.5	-145.8	-176.8	-85.6	-43.5	-31.5	-48.9
Commercial Banks & NBFIs	1,178.5	1,211.0	1,155.5	1,183.7	1,197.0	1,211.5	1,310.6	1,333.3	1,372.8	1,366.2	1,375.9	1,374.8	1,394.8
<b>2. Credit to other public sector</b>	<b>92.6</b>	<b>91.0</b>	<b>90.9</b>	<b>92.2</b>	<b>93.7</b>	<b>88.4</b>	<b>88.8</b>	<b>87.1</b>	<b>88.7</b>	<b>89.1</b>	<b>90.8</b>	<b>91.2</b>	<b>91.9</b>
County government	4.3	4.3	4.3	4.3	4.3	4.4	4.4	4.2	4.6	4.3	4.2	5.7	6.0
Parastatals	88.3	86.7	86.6	88.0	89.4	84.0	84.4	82.9	84.0	84.8	86.6	85.5	85.9
<b>3. Credit to private sector</b>	<b>2,598.7</b>	<b>2,613.0</b>	<b>2,661.2</b>	<b>2,684.4</b>	<b>2,678.8</b>	<b>2,695.0</b>	<b>2,728.8</b>	<b>2,751.8</b>	<b>2,768.6</b>	<b>2,779.6</b>	<b>2,812.8</b>	<b>2,813.1</b>	<b>2,841.6</b>
Agriculture	80.5	82.3	84.2	86.7	87.6	88.1	90.0	91.1	91.2	92.3	94.5	93.4	93.1
Manufacturing	372.2	370.8	387.6	405.1	408.8	397.2	392.7	400.7	405.4	402.4	407.0	409.3	419.2
Trade	460.6	470.8	481.8	487.1	478.6	489.2	493.1	490.9	486.5	483.8	490.1	485.0	485.9
Building and construction	118.7	115.7	118.5	117.0	116.4	114.2	117.2	119.0	119.2	122.0	120.5	119.7	121.6
Transport & communications	187.4	182.9	184.9	189.0	184.2	200.7	214.3	212.9	214.7	216.7	220.7	212.1	214.4
Finance & insurance	95.0	99.7	101.8	100.8	101.5	95.8	100.3	101.2	99.0	99.1	103.3	103.7	108.3
Real estate	374.9	374.6	378.6	386.4	387.7	395.8	397.5	399.4	402.0	401.3	405.6	406.8	408.0
Mining and quarrying	12.5	11.3	13.9	14.3	14.1	14.6	14.3	14.1	14.4	12.7	12.5	12.1	13.7
Private households	437.2	441.1	439.5	439.1	443.7	445.1	449.8	455.3	456.0	460.5	463.1	457.3	459.8
Consumer durables	249.3	250.1	255.2	252.1	251.0	253.5	258.5	264.9	273.6	280.3	287.5	291.3	296.0
Business services	151.3	152.9	154.3	153.7	154.9	154.4	153.9	154.6	156.8	158.1	155.0	160.2	161.2
Other activities	58.9	60.8	60.9	53.1	50.3	46.4	47.4	47.9	49.9	50.5	53.0	62.2	60.4
<b>4. TOTAL (1+2+3)</b>	<b>3,684.3</b>	<b>3,756.1</b>	<b>3,789.0</b>	<b>3,839.9</b>	<b>3,819.6</b>	<b>3,905.7</b>	<b>3,989.7</b>	<b>4,026.4</b>	<b>4,053.3</b>	<b>4,149.4</b>	<b>4,235.9</b>	<b>4,247.6</b>	<b>4,279.4</b>
<b>ANNUAL GROWTH RATE (Per cent)</b>													
<b>1. Net Credit to Government</b>	<b>11.2</b>	<b>20.5</b>	<b>7.5</b>	<b>12.7</b>	<b>35.1</b>	<b>26.0</b>	<b>33.9</b>	<b>36.1</b>	<b>33.7</b>	<b>39.0</b>	<b>47.4</b>	<b>42.7</b>	<b>35.5</b>
Central Bank	75.8	-18.2	20.4	-25.4	-51.8	-53.0	-42.3	-40.5	-3.1	-54.4	-80.8	-82.7	-73.6
Commercial Banks & NBFIs	18.1	13.5	8.7	7.2	10.2	12.2	17.5	19.3	27.5	23.2	21.6	22.3	18.4
<b>2. Credit to other public sector</b>	<b>-7.7</b>	<b>-10.1</b>	<b>-8.8</b>	<b>-7.6</b>	<b>-7.8</b>	<b>-8.3</b>	<b>-7.7</b>	<b>-11.7</b>	<b>-11.2</b>	<b>-10.6</b>	<b>-9.9</b>	<b>-1.2</b>	<b>-0.7</b>
Local government	-1.4	-1.4	-0.5	-1.2	0.1	16.8	2.3	-2.7	2.6	-0.6	-2.0	31.5	39.5
Parastatals	-8.0	-10.5	-9.2	-7.9	-8.2	-9.4	-8.2	-12.1	-11.8	-11.0	-10.2	-2.8	-2.7
<b>3. Credit to private sector</b>	<b>7.3</b>	<b>7.7</b>	<b>8.9</b>	<b>9.0</b>	<b>8.2</b>	<b>7.7</b>	<b>7.9</b>	<b>8.3</b>	<b>7.6</b>	<b>7.7</b>	<b>8.1</b>	<b>8.4</b>	<b>9.3</b>
Agriculture	-4.8	0.2	1.4	2.8	2.6	2.2	1.1	0.9	1.7	17.0	19.3	15.3	15.6
Manufacturing	12.7	10.4	15.3	20.1	18.2	11.1	10.0	13.1	12.6	7.8	10.0	12.0	12.6
Trade	6.0	9.5	9.4	10.3	8.0	9.4	9.1	8.1	6.6	2.5	4.0	3.8	5.5
Building and construction	4.0	-0.5	9.5	7.7	5.7	4.6	5.5	5.2	4.1	8.2	7.4	3.4	2.5
Transport & communications	9.9	7.4	7.1	9.1	5.7	14.9	20.7	19.0	20.6	21.1	17.5	13.6	14.4
Finance & insurance	-1.1	1.9	6.6	3.1	8.4	3.2	3.5	4.6	-3.3	-2.2	0.2	7.1	14.0
Real estate	3.5	3.4	2.2	4.8	4.4	4.9	5.0	6.8	6.6	7.6	9.1	8.7	8.8
Mining and quarrying	-9.4	-14.6	3.9	11.0	5.8	10.0	11.3	12.0	8.2	-14.2	-15.4	-12.9	9.4
Private households	5.6	5.9	3.4	2.2	3.2	3.6	5.4	5.1	3.5	7.3	6.2	4.3	5.2
Consumer durables	21.4	20.6	24.1	19.6	16.7	15.2	13.8	13.7	15.6	15.7	18.8	18.1	18.7
Business services	1.5	2.4	3.3	1.2	2.7	5.3	3.2	3.4	4.1	5.9	2.7	4.0	6.5
Other activities	24.4	33.4	36.8	14.3	16.9	-3.7	-6.7	-7.6	-5.8	-10.4	-14.5	14.0	2.5
<b>4. TOTAL (1+2+3)</b>	<b>7.9</b>	<b>10.5</b>	<b>8.0</b>	<b>9.5</b>	<b>13.9</b>	<b>11.9</b>	<b>14.0</b>	<b>14.6</b>	<b>13.6</b>	<b>15.2</b>	<b>17.5</b>	<b>17.1</b>	<b>16.2</b>

Source: Central Bank of Kenya

## MONEY, CREDIT AND INTEREST RATES

Table 2.3: Interest Rates (Per cent)

	Central Bank Rates				Government T. bill Rates			Commercial Bank Rates				
	Repo		Reverse Repos	Inter-bank	CBR	91-day	182-day	364-day	Deposit	Savings	Lending	Over-draft
	7 days	3 days										
<b>2018</b>												
March	0.00	-	9.95	4.90	9.50	8.02	10.39	10.13	8.16	6.85	13.49	13.40
April	6.75	-	9.64	5.38	9.50	8.00	10.30	11.13	8.17	6.72	13.24	13.29
May	7.44	-	9.60	4.70	9.50	7.96	10.26	11.14	8.08	6.64	13.25	13.30
June	6.16	-	9.56	5.03	9.50	7.87	9.99	10.87	8.04	6.60	13.22	13.23
July	6.56	-	9.46	4.82	9.00	7.69	9.35	10.33	8.01	6.53	13.10	13.16
August	8.01	-	9.02	6.52	9.00	7.64	9.00	9.98	7.78	6.52	12.78	12.90
September	4.77	-	9.03	4.28	9.00	7.64	8.82	9.76	7.76	6.33	12.66	12.52
October	4.70	-	9.06	3.48	9.00	7.56	8.51	9.60	7.57	5.70	12.61	12.42
November	7.10	-	-	4.09	9.00	7.36	8.30	9.53	7.41	5.38	12.55	12.11
December	7.72	-	11.34	8.15	9.00	7.34	8.40	9.68	7.41	5.13	12.51	12.17
<b>2019</b>												
January	3.70	-	-	3.32	9.00	7.23	8.95	10.00	7.34	5.14	12.50	12.15
February	3.15	-	9.03	2.51	9.00	7.06	8.62	9.74	7.28	5.16	12.47	12.13
March	3.49	-	-	3.72	9.00	7.13	8.32	9.53	7.22	5.05	12.51	12.13
April	3.03	-	9.13	4.12	9.00	7.41	8.16	9.39	7.17	4.75	12.50	12.15
May	0.00	-	9.18	5.61	9.00	7.23	7.90	9.40	7.20	4.71	12.47	12.13
June	4.23	-	-	2.98	9.00	6.94	7.71	9.25	7.19	4.77	12.47	12.12
July	4.55	-	-	2.28	9.00	6.81	7.57	8.99	6.97	4.77	12.39	11.89
August	7.37	-	-	3.70	9.00	6.44	7.12	9.16	6.91	4.54	12.46	11.97
September	8.69	-	-	6.59	9.00	6.35	7.10	9.65	6.98	4.58	12.47	11.99
October	7.83	-	-	6.86	9.00	6.38	7.23	9.81	6.96	4.44	12.43	11.88
November	6.30	-	-	4.24	8.50	6.65	7.61	9.79	6.56	4.47	12.38	11.63
December	7.45	-	-	6.03	8.50	7.17	8.16	9.80	7.11	4.02	12.24	11.67
<b>2020</b>												
January	5.38	4.88	-	4.39	8.25	7.23	8.17	9.87	7.07	4.25	12.29	11.97
February	4.44	-	-	4.84	8.25	7.31	8.25	9.85	7.06	4.20	12.19	11.82
March	6.13	7.61	-	4.40	7.25	7.29	8.14	9.20	7.07	4.15	12.09	11.79
April	6.36	6.73	-	5.13	7.00	7.21	8.14	9.07	7.01	4.21	11.92	11.55
May	4.25	-	7.31	3.91	7.00	7.27	8.18	9.16	6.96	4.18	11.95	11.61
June	3.50	-	0.00	3.27	7.00	7.14	7.93	8.85	6.86	4.15	11.89	11.24
July	3.84	-	-	2.12	7.00	6.24	6.69	7.58	6.78	4.11	11.94	11.18
August	3.59	-	7.38	2.56	7.00	6.20	6.56	7.48	6.64	4.11	11.94	11.18
September	6.70	-	7.65	2.95	7.00	6.29	6.70	7.60	6.41	3.78	11.75	11.15
October	6.84	-	-	2.69	7.00	6.49	6.89	7.79	6.26	3.38	11.98	11.44
November	7.03	-	-	3.27	7.00	6.69	7.11	8.04	6.31	3.42	11.99	11.39
December	6.87	-	7.70	5.29	7.00	6.90	7.38	8.27	6.30	2.70	12.02	11.51
<b>2021</b>												
January	5.82	-	7.67	5.12	7.00	6.92	7.48	8.42	-	-	-	-

**CBR** - Central Bank Rate

**REPO** - Repurchase Agreement

**Source:** Central Bank of Kenya

### 3. REAL SECTOR INDICATORS

**Table 3.1: Selected Indicators of Economic Activity**

	Jan-20	Feb-20	Mar-20	Apr-20	May-20	Jun-20	Jul-20	Aug-20	Sept-20	Oct-20	Nov-20	Dec-20	Jan-21
<b>Agriculture</b>													
<b>Horticulture, exports (tonnes)</b>	<b>41,740</b>	<b>43,543</b>	<b>46,231</b>	<b>36,866</b>	<b>40,349</b>	<b>36,537</b>	<b>46,729</b>	<b>45,959</b>	<b>44,025</b>	<b>66,896</b>	<b>41,807</b>	<b>52,849</b>	<b>45,001</b>
Fresh vegetables	18,476	13,999	15,778	13,507	11,915	12,527	20,317	21,979	24,970	31,536	21,092	30,669	18,873
Fruits and nuts	11,948	16,073	19,820	17,075	20,646	16,919	17,958	14,822	10,196	24,636	10,773	10,015	13,710
Cut flowers	11,316	13,471	10,633	6,284	7,788	7,091	8,455	9,158	8,859	10,724	9,941	12,165	12,418
<b>Horticulture, exports (KSh Millions)</b>	<b>8,677</b>	<b>9,282</b>	<b>9,840</b>	<b>7,230</b>	<b>8,032</b>	<b>7,062</b>	<b>8,039</b>	<b>8,514</b>	<b>8,582</b>	<b>10,150</b>	<b>8,538</b>	<b>8,538</b>	
Fresh vegetables	2,573	1,970	2,442	2,333	1,975	2,102	2,486	2,757	3,272	3,620	2,863	4,207	3,193
Fruits and nuts	1,448	2,041	2,973	2,813	3,325	3,133	3,297	2,999	2,274	2,831	2,391	1,812	2,251
Cut flowers	5,484	5,947	5,455	3,108	3,738	3,005	3,519	4,017	3,947	4,730	4,265	5,259	5,611
Tea, production (tonnes)	53,636	49,201	55,733	49,656	47,004	46,378	36,554	38,525	43,413	48,275	47,670	54,412	...
Coffee, sales (tonnes) <sup>1</sup>	3,049	4,410	4,845	2,242	1,125	-	1,310	1,209	1,913	1,329	1,318	1,667	...
Cane, deliveries ('000 tonnes)	523	530	583	535	544	572	626	629	645	...	...	...	...
Milk intake, formal sector (million litres)	63	54	56	49	49	53	54	59	55	...	...	...	...
<b>Manufacturing</b>													
Sugar, production (tonnes)	53,155	51,083	52,897	45,458	46,350	49,681	53,131	53,532	54,873	..	..	..	..
Soft drinks, production (million litres)	52,654	49,406	49,494	46,015	34,129	44,829	44,394	39,290	49,993	...	...	...	...
Galvanised sheets, production (tonnes)	23,397	21,989	18,527	12,469	18,076	18,307	25,898	24,631	25,405	27,038	...	...	...
Cement, production (tonnes)	530,404	548,818	559,424	509,197	511,961	527,619	600,571	628,496	696,159	768,898	716,583	...	...
Assembled vehicles, production (units)	614	861	830	669	659	415	719	768	798	...	...	...	...
<b>Electricity</b>													
<b>Electricity, generation (million KWH)</b>	<b>986</b>	<b>934</b>	<b>969</b>	<b>841</b>	<b>881</b>	<b>913</b>	<b>969</b>	<b>977</b>	<b>973</b>	<b>1,023</b>	<b>998</b>	<b>1,012</b>	...
Hydro	358	342	359	298	319	334	358	358	356	373	386	400	...
Geo-thermal	477	431	460	412	392	421	433	424	381	440	397	393	...
Thermal	55	54	56	36	56	62	61	70	89	79	60	77	...
Wind	90	100	86	88	106	88	110	119	140	122	148	135	...
Solar	8	7	8	8	8	7	7	7	7	8	8	7	...
Co-generation	0.0	0.0	0.0	0.0	0.0	0.0	0.0	0.0	0.0	0.0	0	0	...
<b>Construction</b>													
Cement, consumption (tonnes)	528,904	547,543	551,914	506,800	509,698	524,998	594,028	607,383	666,508	760,769	710,685	...	...
Electricity, consumption (million KWH)	772	740	762	645	660	716	729	734	751	790	758	748	...
<b>Transport and Storage</b>													
<b>Visitor arrivals (Actual no.)</b>	<b>127,087</b>	<b>119,670</b>	<b>47,296</b>	<b>12</b>	<b>1,229</b>	<b>536</b>	<b>618</b>	<b>13,919</b>	<b>20,164</b>	<b>29,635</b>	<b>31,875</b>	<b>47,406</b>	...
JKIA - Nairobi	114,873	108,578	43,346	12	1,229	534	617	13,371	19,403	28,451	30,719	44,279	...
MIA - Mombasa	12,214	11,092	3,950	...	...	2	1	548	761	1,184	1,156	3,127	...
<b>Fuel Prices (Average Retail)</b>													
Crude oil price, Murban Adnoc (Abu Dhabi FOB), US\$ per barrel	66	56	34	18	25	37	43	45	42	40	43	49	...
Premium fuel (KSh per Litre)	111	113	112	94	85	90	101	105	106	108	107	108	...
Diesel Oil (KSh per Litre)	103	105	103	99	80	76	93	96	95	94	92	93	...
Kerosene (KSh per Litre)	104	104	97	79	81	64	66	85	84	85	83	85	...
L.P.G (KSh per 13Kg)	2,145	2,055	2,066	2,078	2,076	2,079	2,075	2,060	2,034	2,018	2,020	1,977	...
Charcoal (KSh per 4Kg tin)	152	58	57	58	57	57	57	59	58	58	58	58	...

... Data not available

Source: Kenya National Bureau of Statistics

## 4. BALANCE OF PAYMENTS AND EXTERNAL SECTOR INDICATORS

Table 4.1 : Analytical Balance of Payment Statement Cumulative Flows (USD Millions)<sup>1</sup>

Cumulative 12 months <sup>1/2</sup>	Jan-20	Feb-20	Mar-20	Apr-20	May-20	Jun-20	Jul-20	Aug-20	Sep-20	Oct-20	Nov-20	Dec-20	Jan-21
<b>A. Current Account, n.i.e.</b>	<b>-5,738.3</b>	<b>-5,687.2</b>	<b>-5,635.7</b>	<b>-5,488.7</b>	<b>-5,137.5</b>	<b>-5,076.8</b>	<b>-4,836.9</b>	<b>-4,927.6</b>	<b>-4,882.7</b>	<b>-4,815.9</b>	<b>-4,725.7</b>	<b>-4,564.0</b>	<b>-4,441.2</b>
Goods: exports f.o.b.	5,874.8	5,972.3	6,070.1	5,992.6	5,975.9	5,923.6	5,921.7	5,942.8	6,015.9	6,005.3	5,962.9	6,062.9	6,029.4
Goods: imports f.o.b.	16,548.2	16,462.5	16,512.8	16,150.4	15,667.7	15,383.6	15,085.3	14,960.8	14,956.3	14,766.0	14,492.6	14,410.3	14,340.6
Services: credit	5,503.5	5,410.2	5,333.0	5,157.9	4,969.8	4,783.4	4,605.6	4,425.7	4,288.8	4,082.5	3,891.8	3,834.0	3,762.4
Services: debit	3,903.4	3,953.0	3,980.3	3,923.9	3,812.3	3,755.3	3,721.0	3,693.9	3,683.6	3,629.2	3,606.3	3,595.5	3,546.6
Balance on goods and services	-9,073.2	-9,033.0	-9,090.0	-8,923.8	-8,534.3	-8,431.9	-8,279.0	-8,286.2	-8,335.2	-8,307.4	-8,244.1	-8,108.8	-8,095.4
Primary income: credit	229.4	229.2	226.6	218.1	208.6	188.4	181.8	173.1	171.9	163.0	154.4	147.6	140.2
Primary income: debit	2,188.6	2,162.7	2,004.8	1,940.0	1,948.3	1,845.8	1,762.0	1,796.0	1,706.8	1,643.2	1,615.3	1,575.8	1,452.9
Balance on goods, services, and primary income	-11,032.3	-10,966.6	-10,868.2	-10,645.6	-10,274.0	-10,089.4	-9,859.2	-9,909.0	-9,870.1	-9,787.6	-9,705.1	-9,537.0	-9,408.2
Secondary income, n. i. e.: credit	5,348.2	5,333.7	5,286.8	5,210.2	5,188.6	5,064.1	5,079.1	5,037.2	5,042.4	5,025.3	5,032.0	5,024.5	5,017.2
Secondary income: debit	54.2	54.4	54.2	53.3	52.0	51.5	56.9	55.8	55.0	53.6	52.6	51.5	50.1
<b>B. Capital Account, n.i.e.</b>	<b>215.9</b>	<b>193.1</b>	<b>189.6</b>	<b>130.1</b>	<b>161.3</b>	<b>146.1</b>	<b>146.1</b>	<b>133.9</b>	<b>155.1</b>	<b>121.0</b>	<b>122.7</b>	<b>130.4</b>	<b>138.7</b>
Capital account, n.i.e.: credit	215.9	193.1	189.6	130.1	161.3	146.1	146.1	133.9	155.1	121.0	122.7	130.4	138.7
Capital account: debit	0.0	0.0	0.0	0.0	0.0	0.0	0.0	0.0	0.0	0.0	0.0	0.0	0.0
<b>C. Financial Account, n.i.e.</b>	<b>-5,960.8</b>	<b>-5,766.6</b>	<b>-5,720.5</b>	<b>-5,727.1</b>	<b>-3,564.5</b>	<b>-4,597.6</b>	<b>-4,086.2</b>	<b>-3,869.4</b>	<b>-3,726.2</b>	<b>-3,201.6</b>	<b>-2,879.1</b>	<b>-2,850.5</b>	<b>-2,697.0</b>
Direct investment: assets	210.2	220.1	226.0	204.6	176.5	159.9	160.2	162.5	166.5	164.2	155.4	154.7	142.6
Direct investment: liabilities, n.i.e.	1,274.3	1,218.7	1,156.6	1,067.0	981.4	838.8	767.0	708.6	648.1	543.1	477.3	398.4	392.1
Portfolio investment: assets	942.3	943.1	1,005.7	1,050.4	1,108.6	1,111.0	1,138.1	1,148.3	1,136.7	1,143.8	1,163.3	1,201.8	1,221.5
Equity and investment fund shares	770.2	770.3	811.9	847.6	900.9	895.5	912.2	901.9	896.1	845.9	832.5	850.2	839.1
Debt securities	168.8	177.7	193.9	202.9	207.9	215.6	226.1	246.5	240.8	298.0	331.0	351.7	385.8
Portfolio investment: liabilities, n.i.e.	2,294.9	2,268.1	2,165.3	2,116.7	-55.7	-61.4	-104.1	-94.1	-110.0	-164.7	-191.0	-187.5	-143.2
Equity and investment fund shares	32.7	4.2	-100.5	-139.9	-203.1	-210.1	-239.8	-254.3	-254.9	-252.2	-255.9	-271.4	-271.0
Debt securities	2,262.2	2,263.9	2,265.8	2,256.6	147.4	148.7	135.7	160.3	144.9	87.5	64.9	83.9	127.8
Financial derivatives: net	-8.4	-3.4	4.4	-0.8	-1.5	4.0	-1.0	-1.3	11.1	12.6	-61.7	-9.1	0.5
Other investment: assets	767.2	924.9	531.5	405.3	859.2	429.5	480.4	445.8	201.1	299.0	722.8	1,012.2	1,133.0
Other investment: liabilities, n.i.e.	4,302.9	4,364.4	4,166.1	4,202.9	4,781.6	5,524.7	5,201.0	5,010.2	4,703.6	4,442.7	4,572.5	4,999.2	4,945.6
<b>of which</b>													
Other debt instruments	4,298.1	4,359.9	4,161.9	4,199.0	4,778.0	5,521.5	5,198.2	5,007.7	4,701.5	4,441.0	4,571.3	4,998.4	4,944.9
Deposit-taking corporations, except the central bank	576.8	643.6	547.3	691.9	721.2	714.1	647.1	557.5	347.4	352.4	474.5	553.7	521.4
General government	1,336.9	1,301.3	1,201.3	1,090.6	1,700.3	2,487.6	2,257.8	2,178.6	2,148.7	1,925.5	1,882.6	2,138.5	2,075.7
Other sectors	2,384.7	2,415.1	2,413.0	2,416.2	2,356.3	2,324.8	2,292.3	2,270.3	2,204.0	2,157.6	2,212.6	2,304.7	2,346.0
Nonfinancial corporations, households, and NPISHs	2,384.7	2,415.1	2,413.0	2,416.2	2,356.3	2,324.8	2,292.3	2,270.3	2,204.0	2,157.6	2,212.6	2,304.7	2,346.0
<b>D. Net Errors and Omissions</b>	<b>374.0</b>	<b>81.8</b>	<b>66.4</b>	<b>71.2</b>	<b>1,201.1</b>	<b>859.5</b>	<b>697.4</b>	<b>640.7</b>	<b>379.3</b>	<b>550.9</b>	<b>801.1</b>	<b>798.9</b>	<b>768.4</b>
<b>E. Overall Balance</b>	<b>-812.4</b>	<b>-354.2</b>	<b>-340.9</b>	<b>-439.7</b>	<b>210.5</b>	<b>-526.4</b>	<b>-92.7</b>	<b>283.7</b>	<b>622.1</b>	<b>942.4</b>	<b>922.9</b>	<b>784.3</b>	<b>837.0</b>
<b>F. Reserves and Related Items</b>	<b>812.4</b>	<b>354.2</b>	<b>340.9</b>	<b>439.7</b>	<b>-210.5</b>	<b>526.4</b>	<b>92.7</b>	<b>-283.7</b>	<b>-622.1</b>	<b>-942.4</b>	<b>-922.9</b>	<b>-784.3</b>	<b>-837.0</b>
Reserve assets	658.5	199.9	186.8	286.1	-364.4	431.1	-2.7	-379.5	-654.6	-985.5	-956.2	-818.5	-871.5
Credit and loans from the IMF	-154.0	-154.4	-154.0	-153.6	-153.9	-95.3	-95.4	-95.8	-32.5	-43.1	-33.3	-34.2	-34.5
Exceptional financing	0.0	0.0	0.0	0.0	0.0	0.0	0.0	0.0	0.0	0.0	0.0	0.0	0.0

<sup>1/</sup>Sum of flows over twelve months to the reporting period.

Source: Central Bank of Kenya

## BALANCE OF PAYMENTS AND EXTERNAL SECTOR INDICATORS

**Table 4.2: Monthly Average Exchange Rates**

MONTH	CURRENCY							
	USD	UK POUND	EURO	SA RAND	USHS	TSHS	RWF	BIF
	KENYA SHILLINGS PER UNIT OF CURRENCY <sup>1</sup>				UNITS OF CURRENCY PER KENYA SHILLING <sup>2</sup>			
<b>2018</b>								
October	101.08	131.60	116.20	7.00	37.40	22.66	8.74	17.60
November	102.36	132.08	116.35	7.25	36.54	22.46	8.68	17.41
December	102.29	129.74	116.45	7.22	36.32	22.49	8.72	17.48
<b>2019</b>								
January	101.58	130.76	115.95	7.29	36.45	22.72	8.80	17.68
February	100.23	130.29	113.81	7.27	36.64	23.23	8.94	17.96
March	100.36	132.29	113.51	6.99	36.92	23.36	8.97	18.01
April	101.07	131.77	113.58	7.13	36.97	22.88	8.93	18.10
May	101.15	130.06	113.17	7.01	37.22	22.74	8.95	18.12
June	101.69	128.82	114.73	6.96	36.72	22.61	8.94	18.07
July	103.16	128.92	115.83	7.35	35.84	22.30	8.86	17.83
August	103.30	125.59	114.96	6.83	35.76	22.26	8.88	17.86
September	103.80	128.16	114.35	6.99	35.41	22.15	8.87	17.79
October	103.67	130.65	114.41	6.95	35.65	22.19	8.88	17.89
November	102.39	131.96	113.22	6.91	36.12	22.49	9.08	18.31
December	101.50	132.88	112.67	7.02	36.21	22.65	9.25	18.50
<b>2020</b>								
January	101.09	132.15	112.29	7.04	36.41	22.79	9.38	18.61
February	100.79	130.83	109.94	6.72	36.45	22.91	9.43	18.71
March	103.74	128.54	114.67	6.29	36.33	22.23	9.16	18.22
April	106.41	131.92	115.61	5.74	35.56	21.75	8.95	17.77
May	106.68	131.29	116.12	5.87	35.54	21.70	8.88	17.80
June	106.40	133.38	119.83	6.22	35.13	21.76	8.96	17.90
July	107.27	135.30	122.51	6.39	34.53	21.62	8.92	17.95
August	108.14	141.85	127.83	6.28	34.00	21.48	8.91	17.84
September	108.41	140.89	128.01	6.48	34.08	21.40	8.94	17.81
October	108.64	140.94	127.85	6.59	34.22	21.35	8.99	17.80
November	109.25	144.13	129.15	7.00	33.97	21.23	9.01	17.73
December	110.59	148.42	134.33	7.41	33.16	20.97	8.95	17.53
<b>2021</b>								
January	109.83	149.75	133.80	7.26	33.61	21.11	9.03	17.68

USD - United States Dollar

SA RAND - South African Rand

USHS - Uganda Shilling

TSHS - Tanzania Shilling

RWF - Rwanda Franc

BIF - Burundi Franc

<sup>1</sup>Kenya Shillings per unit of currency e.g 91.36 KShs=1 USD

<sup>2</sup>Units of currency per Kenya Shilling e.g 31.29 USHS= 1 KShs

**Source: Central Bank of Kenya**

## BALANCE OF PAYMENTS AND EXTERNAL SECTOR INDICATORS

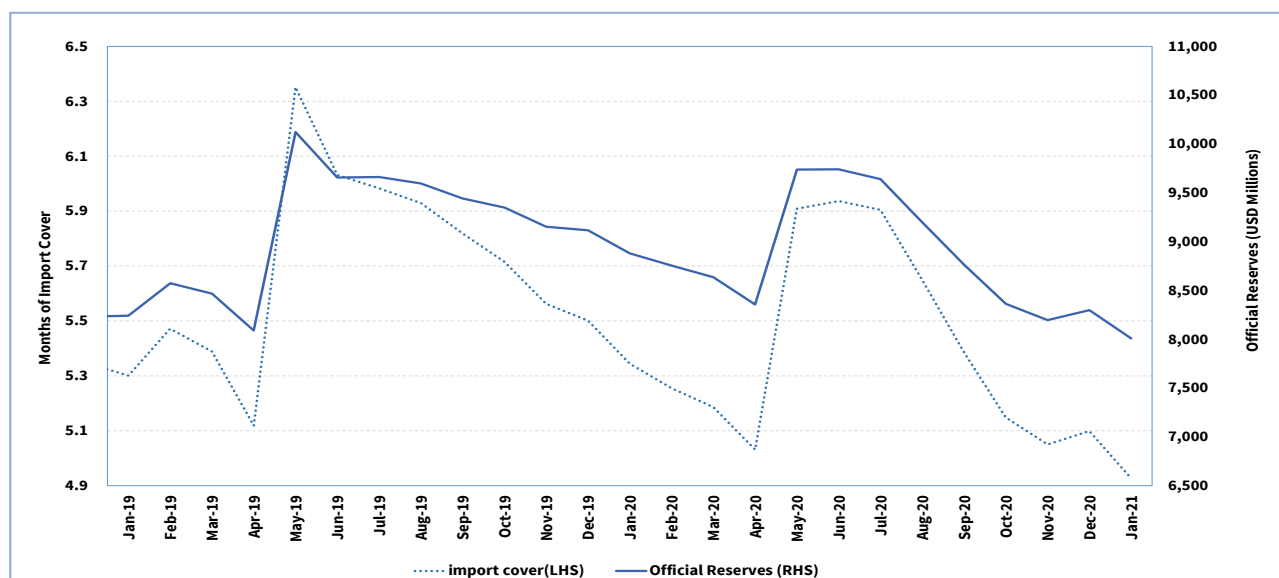
**Table 4.3 Foreign Exchange Reserves (End of Period USD Million)**

	Jan-2020	Feb-2020	Mar-20	Apr-2020	May-20	Jun-20	Jul-20	Aug-20	Sep-20	Oct-20	Nov-20	Dec-20	Jan-21
<b>Gross Reserves</b>	12,766.3	12,834.8	12,447.0	12,285.7	13,805.7	13,680.9	13,523.7	13,180.6	12,585.0	12,603.4	12,551.6	12,991.9	12,886.3
<i>of which</i>													
Official Reserves	8,880.2	8,753.6	8,634.9	8,356.6	9,738.3	9,739.9	9,639.5	9,197.0	8,765.1	8,363.0	8,195.9	8,297.3	8,008.7
Months of import cover <sup>1</sup>	5.3	5.3	5.2	5.0	5.9	5.9	5.9	5.6	5.4	5.1	5.0	5.1	4.9
Commercial Banks	3,886.1	4,081.2	3,812.1	3,929.0	4,067.3	3,940.9	3,884.2	3,983.6	3,819.9	4,240.4	4,355.7	4,694.6	4,877.7

<sup>1</sup>Based on 36 month average of imports of goods and services

Source: Central Bank of Kenya

**Chart 1: Official Reserves and Months of Import Cover**



Source: Central Bank of Kenya

## 5. DEVELOPMENTS IN THE BANKING SECTOR

**Table 5.1: Kenyan Banking Sector Performance Indicators (KSh Billion)**

	Total Assets	Shareholders Funds	Gross Loans	Gross Non-Performing Loans	Gross Deposits	Total Liquidity Ratio (%) (Average)	Profit Before Tax ◇
<b>2018</b>							
October	4,448.2	676.5	2,590.1	319.7	3,268.0	48.9	127.6
November	4,392.9	678.1	2,562.3	313.9	3,258.9	48.7	142.6
December	4,446.1	676.9	2,567.3	308.8	3,332.4	48.6	152.3
<b>2019</b>							
January	4,462.6	688.7	2,553.7	319.1	3,322.2	49.1	13.4
February	4,510.5	703.7	2,558.5	327.9	3,314.2	49.8	25.3
March	4,571.6	715.2	2,583.9	330.3	3,400.1	50.8	44.0
April	4,600.7	722.3	2,602.6	335.8	3,373.2	51.0	56.8
May	4,592.9	705.6	2,617.8	337.2	3,401.0	50.4	70.0
June	4,719.7	720.3	2,653.8	335.9	3,506.0	50.6	85.8
July	4,751.2	729.3	2,707.1	336.4	3,476.2	51.0	99.1
August	4,791.4	738.1	2,719.8	342.2	3,486.1	50.8	112.7
September	4,798.5	741.9	2,766.7	342.4	3,491.9	50.9	125.3
October	4,824.2	750.0	2,826.3	347.7	3,556.5	51.2	140.7
November	4,767.8	757.0	2,778.0	346.4	3,482.7	50.0	150.1
December	4,832.3	753.1	2,774.6	333.3	3,554.4	49.7	159.9
<b>2020</b>							
January	4,831.3	760.6	2,757.6	336.5	3,546.8	49.8	13.2
February	4,902.8	754.1	2,774.6	351.8	3,608.5	51.1	24.7
March	5,001.2	752.6	2,847.4	357.0	3,688.1	51.4	38.3
April	5,045.7	753.5	2,868.1	375.5	3,743.0	51.2	45.3
May	5,110.8	760.8	2,900.7	377.7	3,768.6	51.3	53.9
June	5,207.8	769.5	2,908.7	382.0	3,903.6	52.8	60.0
July	5,293.7	781.6	2,934.2	390.3	3,952.0	49.7	74.0
August	5,285.5	787.7	2,939.1	399.8	3,905.7	53.2	81.3
September	5,266.0	789.5	2,943.4	401.6	3,904.4	53.2	89.2
October	5,305.9	800.2	2,969.2	402.3	3,960.0	53.3	98.9
November	5,421.8	809.2	3,011.5	411.1	4,029.9	54.0	107.7
December	5,420.1	816.4	2,999.5	424.1	4,021.9	54.6	112.8
<b>2021</b>							
January	5,447.8	824.8	3,028.9	431.7	4,030.1	54.9	15.1

Note: Data in this table excludes that for Charterhouse Bank, Chase Bank and Imperial Bank which were under receivership

◇ Unaudited

Source: Central Bank of Kenya



## 6. GOVERNMENT BUDGETARY OPERATIONS

**Table 6.1 Composition of Government Revenue (KSh Billion)**

FISCAL YEAR <sup>1</sup>	REVENUE AND GRANTS									
	TAX REVENUE									
	i	ii	iii	iv	v	vi= i+ii+iii+iv+v	vii	viii=vi+vii	ix	x=viii+ix
Import Duty	Excise Duty	Income Tax	VAT	Other Tax Rev- enue	Tax Revenue	Non-Tax Revenue	Total Revenue	Grants	Total Revenue (Including Grants)	
<b>FY 2018/2019</b>										
July	8.30	15.93	41.77	29.94	2.85	98.78	11.37	110.16	-	110.16
August	18.18	29.28	89.56	61.80	6.31	205.13	21.97	227.11	1.50	228.60
September	25.76	42.79	159.11	92.64	9.03	329.34	36.66	365.99	3.58	369.57
October	36.07	57.72	207.37	126.60	12.18	439.94	49.87	489.80	6.43	496.23
November	44.79	75.58	255.08	165.20	15.11	555.77	63.24	619.01	8.19	627.19
December	51.70	91.72	325.54	193.85	17.94	680.76	113.90	794.65	8.67	803.48
January	61.15	110.27	380.40	232.44	21.11	805.37	119.43	924.81	9.44	934.25
February	69.88	125.59	413.27	266.93	24.24	899.90	132.92	1,032.82	12.30	1,045.13
March	78.82	142.18	470.10	300.15	27.27	1,018.51	138.68	1,157.19	16.83	1,174.02
April	86.71	158.22	545.05	334.98	30.36	1,155.32	178.54	1,333.86	18.94	1,352.79
May	97.25	178.44	605.29	374.35	33.93	1,289.26	204.45	1,493.70	20.39	1,514.09
June*	107.70	196.59	685.39	413.19	37.35	1,440.21	204.46	1,644.67	30.35	1,675.02
<b>FY 2019/2020</b>										
July	7.55	16.33	45.84	34.26	3.12	107.10	10.03	117.13	-	117.13
August	16.18	31.62	95.22	68.88	6.99	218.90	18.45	237.35	2.92	240.27
September	25.73	49.72	180.72	105.78	9.50	371.45	49.71	421.16	2.80	423.96
October	34.22	67.64	241.04	140.45	13.89	497.24	61.98	559.22	8.47	567.69
November	42.86	85.84	285.28	178.10	18.48	610.56	122.66	733.21	9.62	742.83
December	51.55	103.38	367.43	211.54	22.75	756.65	173.73	930.37	10.15	940.52
January	61.78	123.64	416.73	245.67	26.72	874.54	186.96	1,061.50	13.54	1,075.03
February	69.75	140.04	456.39	275.44	30.45	972.07	203.77	1,175.84	14.05	1,189.89
March	76.93	159.49	519.71	305.66	34.45	1,096.25	235.95	1,332.19	13.58	1,345.77
April	83.10	171.02	591.24	332.24	36.95	1,214.56	253.83	1,468.39	13.40	1,481.79
May	89.25	182.08	638.96	354.43	39.53	1,304.26	279.17	1,583.43	18.16	1,601.59
June	98.02	195.27	706.94	383.71	43.57	1,427.51	306.12	1,733.63	19.82	1,753.45
<b>FY 2020/2021</b>										
July	6.68	15.05	42.99	26.19	3.52	94.43	10.83	105.25	-	105.25
August	14.35	31.00	80.63	53.57	7.69	187.25	24.61	211.86	1.38	213.23
September	23.17	47.35	151.25	83.06	11.94	316.77	61.90	378.68	3.92	382.59
October	32.07	64.45	198.21	114.14	16.42	425.29	80.02	505.31	4.40	509.72
November	40.66	83.49	234.07	144.76	20.54	523.52	100.67	624.18	5.80	629.98
December	51.80	102.78	309.24	179.07	25.80	668.69	141.86	810.55	8.50	819.05
January	59.92	123.05	350.58	215.79	29.93	779.27	157.77	937.04	11.10	948.15

\*Provisional or estimated figures

<sup>1</sup> Figures are cumulative from the beginning of the fiscal year in July.

Source: *The National Treasury*

## GOVERNMENT BUDGETARY OPERATIONS

Table 6.2 Composition of Government Expenditure (KSh Billion)

FISCAL YEAR\¹	EXPENDITURE (COMMITMENT BASIS)								
	RECURRENT EXPENDITURE					i	ii	iii	iv=i+ii+iii
	Domestic Interest	Foreign Interest	Wages & Salaries	Pensions	Other	Total Recurrent Expenditure	Development Expenditure\²	County Transfer	Total Expenditure
<b>FY 2018/2019</b>									
July	17.31	10.46	37.01	3.30	21.39	89.47	2.20	-	91.68
August	34.00	19.08	74.03	7.69	78.03	212.83	36.08	4.03	252.94
September	61.12	22.98	94.98	13.12	141.55	333.75	83.55	23.53	452.46
October	82.89	32.38	148.05	18.28	163.26	444.87	130.30	44.70	619.87
November	105.51	32.38	185.07	22.93	196.78	542.67	234.87	74.49	852.03
December	131.53	46.10	201.62	38.17	346.17	643.90	311.88	119.67	1,075.46
January	146.77	52.48	247.96	37.39	478.46	812.80	303.28	150.26	1,266.34
February	165.63	61.12	283.38	43.88	547.61	924.31	364.47	177.31	1,466.10
March	193.34	80.05	318.06	50.73	617.29	1,053.84	384.92	205.63	1,644.39
April	220.09	86.27	354.23	55.60	721.28	1,203.19	419.13	234.29	1,856.60
May	245.96	90.45	389.65	60.24	542.75	1,329.05	477.43	263.35	2,069.82
June*	264.83	103.72	427.95	84.61	618.89	1,500.00	529.20	360.33	2,389.53
<b>FY 2019/2020</b>									
July	28.75	15.12	38.34	3.15	22.89	108.24	4.73	-	112.97
August	50.37	25.53	76.68	6.53	78.73	237.85	17.04	-	254.89
September	76.25	34.16	109.72	26.26	144.79	391.18	95.90	57.54	544.63
October	97.81	40.48	153.36	29.06	182.55	503.26	129.88	69.43	702.58
November	126.43	52.40	191.70	33.13	232.03	635.70	183.62	87.71	907.02
December	147.16	61.51	225.71	50.20	343.16	827.75	268.15	122.21	1,218.10
January	171.47	76.61	268.38	53.48	371.30	941.23	335.16	160.47	1,436.86
February	195.97	86.77	306.72	59.77	415.69	1,064.93	360.57	188.94	1,614.45
March	223.27	94.55	331.86	74.15	457.67	1,181.50	471.96	214.78	1,868.24
April	255.06	100.60	380.12	74.50	487.02	1,297.29	426.55	246.87	1,970.72
May	285.61	112.45	421.74	76.25	549.38	1,445.43	470.37	263.09	2,178.90
June	315.36	121.84	449.93	89.61	668.49	1,645.22	594.94	325.28	2,565.44
<b>FY 2019/2020</b>									
July	27.70	15.03	26.36	3.97	15.66	88.72	4.58	0.91	94.21
August	56.78	30.34	75.22	13.58	75.71	251.63	54.22	28.02	333.87
September	81.17	34.13	118.57	26.19	99.43	359.49	122.06	28.84	510.39
October	115.68	38.13	165.44	30.37	152.91	502.54	137.31	81.90	721.74
November	154.62	51.71	206.81	32.16	192.50	637.79	185.61	108.04	931.44
December	186.75	61.06	238.21	53.82	283.54	823.38	262.78	128.69	1,214.84
January	218.19	62.84	289.53	49.69	315.66	935.90	246.80	164.40	1,347.10

\*Provisional or estimated figures

\¹ Figures are cumulative from the beginning of the fiscal year in July.

\²Includes Equalization fund

Source: The National Treasury

## GOVERNMENT BUDGETARY OPERATIONS

Table 6.3: Government Deficit Financing\ (KSh Billion)

FISCAL YEAR	GOVERNMENT DEFICIT FINANCING		
	i	ii	iii=i+ii
	Domestic\2	Foreign\3	Total Financing
<b>FY 2017/2018</b>			
May	205.79	309.59	515.38
June	273.71	331.64	605.35
<b>FY 2018/2019</b>			
July	28.27	-1.48	26.78
August	61.85	17.64	79.48
September	69.21	16.83	86.04
October	133.37	32.97	166.34
November	139.44	101.97	241.41
December	131.79	144.45	276.24
January	204.57	154.81	359.38
February	232.56	165.09	397.65
March	329.60	178.91	508.51
April	318.73	191.06	509.79
May	170.81	400.55	571.35
June	301.69	405.01	706.69
<b>FY 2019/20</b>			
July	1.67	-2.68	-1.01
August	42.93	0.03	42.96
September	80.77	13.15	93.92
October	124.04	13.25	137.29
November	106.22	37.26	143.48
December	172.49	80.67	253.16
January	286.88	80.48	367.37
February	314.50	86.99	401.49
March	369.59	98.35	467.94
April	340.72	94.94	435.66
May	338.72	248.45	587.17
June	450.37	340.80	791.18
<b>FY 2020/21</b>			
July	40.08	-20.04	20.04
August	135.17	-19.03	116.14
September	152.40	-22.64	129.77
October	236.15	-27.49	208.66
November	314.86	0.50	315.35
December	344.99	14.53	359.52
January	371.67	19.05	390.72

\1 Figures are cumulative from the beginning of the fiscal year in July.

\2 Domestic debt is reported on gross basis.

\3 Includes public and publicly guaranteed foreign currency loans.

Source: The National Treasury and Central Bank of Kenya

## 7. PUBLIC DEBT

**Table 7.1: Stock of Kenya's Public and Publicly Guaranteed Debt (KSh Billion)**

	Jan-20	Feb-20	Mar-20	Apr-20	May-20	Jun-20	Jul-20	Aug-20	Sept-20	Oct-20	Nov-20	Dec-20	Jan-21
<b>EXTERNAL DEBT</b>													
Bilateral	1,016.5	1,015.8	1,075.9	1,070.1	1,090.2	1,074.3	1,086.4	1,101.8	1,102.9	1,125.7	1,143.6	1,157.0	
Multilateral	1,027.24	1,028.26	1,060.61	1,114.36	1,272.40	1,321.63	1,410.66	1,423.20	1,421.84	1,443.65	1,484.57	1,498.84	
Commercial Banks	1,052.48	1,056.25	1,058.80	1,115.13	1,116.09	1,102.29	1,123.61	1,123.39	1,120.80	1,118.26	1,125.47	1,119.39	
Export Credit	16.65	16.71	17.33	17.76	17.70	17.63	17.83	17.91	17.96	18.01	18.22	18.07	
<b>Sub-Total</b>	<b>3,112.90</b>	<b>3,117.04</b>	<b>3,212.63</b>	<b>3,317.33</b>	<b>3,496.43</b>	<b>3,515.81</b>	<b>3,638.51</b>	<b>3,666.32</b>	<b>3,663.49</b>	<b>3,705.64</b>	<b>3,771.81</b>	<b>3,793.29</b>	
(As a % of total debt)	50.89	50.62	51.13	51.54	52.58	52.53	52.64	51.87	51.45	51.73	51.99	52.09	
<b>DOMESTIC DEBT</b>													
<b>Banks</b>	<b>1,650.54</b>	<b>1,662.56</b>	<b>1,677.03</b>	<b>1,713.89</b>	<b>1,726.00</b>	<b>1,751.52</b>	<b>1,801.91</b>	<b>1,878.63</b>	<b>1,915.40</b>	<b>1,899.05</b>	<b>1,894.71</b>	<b>1,867.93</b>	
Central Bank	111.45	82.73	106.43	106.84	101.85	98.32	51.15	94.54	107.36	114.70	103.86	98.74	
Commercial Banks	1,539.09	1,579.84	1,570.59	1,607.05	1,624.15	1,653.19	1,750.76	1,784.09	1,808.04	1,784.35	1,790.85	1,769.19	
<b>Non-banks</b>	<b>1,322.68</b>	<b>1,347.03</b>	<b>1,361.59</b>	<b>1,372.10</b>	<b>1,394.47</b>	<b>1,393.20</b>	<b>1,437.79</b>	<b>1,489.90</b>	<b>1,507.59</b>	<b>1,524.55</b>	<b>1,554.12</b>	<b>1,586.77</b>	
Pension Funds	857.11	877.50	891.43	905.92	929.60	923.09	958.44	996.90	986.16	993.97	1,031.84	1,057.69	
Insurance Companies	192.31	191.27	193.56	193.99	192.68	192.22	202.52	207.65	212.83	217.84	219.36	224.61	
Other Non-bank Sources	273.26	278.26	276.59	272.19	272.19	277.88	276.83	285.36	308.60	312.74	302.93	304.47	
<b>Non-residents</b>	<b>30.48</b>	<b>30.81</b>	<b>31.57</b>	<b>33.42</b>	<b>32.68</b>	<b>33.15</b>	<b>33.85</b>	<b>33.97</b>	<b>34.12</b>	<b>34.05</b>	<b>33.82</b>	<b>33.84</b>	
<b>Sub-Total</b>	<b>3,003.70</b>	<b>3,040.41</b>	<b>3,070.19</b>	<b>3,119.42</b>	<b>3,153.14</b>	<b>3,177.87</b>	<b>3,273.55</b>	<b>3,402.50</b>	<b>3,457.11</b>	<b>3,457.64</b>	<b>3,482.65</b>	<b>3,488.54</b>	
(As a % of total debt)	49.11	49.38	48.87	48.46	47.42	47.48	47.36	48.13	48.55	48.27	48.01	47.91	
<b>GRAND TOTAL</b>	<b>6,116.60</b>	<b>6,157.45</b>	<b>6,282.82</b>	<b>6,436.75</b>	<b>6,649.57</b>	<b>6,693.68</b>	<b>6,912.06</b>	<b>7,068.82</b>	<b>7,120.60</b>	<b>7,163.29</b>	<b>7,254.46</b>	<b>7,281.83</b>	

Source: The National Treasury and Central Bank of Kenya

## PUBLIC DEBT

**Table 7.2: Composition of Government Gross Domestic Debt by Instrument (KSh Billion)**

	Jan-20	Feb-20	Mar-20	Apr-20	May-20	Jun-20	Jul-20	Aug-20	Sep-20	Oct-20	Nov-20	Dec-20	Jan-21
Treasury Bills <sup>\1</sup>	901.1	938.4	921.7	909.8	918.8	907.7	970.6	936.2	914.7	878.6	884.2	875.7	805.4
Treasury Bonds	2,038.7	2,066.9	2,090.3	2,149.7	2,179.5	2,220.3	2,297.8	2,418.3	2,482.2	2,511.3	2,541.5	2,561.3	2,667.0
Overdraft at Central Bank	59.2	30.5	54.2	54.6	50.1	47.1	-	43.4	56.2	63.5	52.7	47.6	55.3
Advances from Commercial Banks	3.5	3.4	2.8	4.0	3.5	2.0	3.8	3.3	2.7	2.9	3.0	2.7	3.6
Other Domestic Debt <sup>\2</sup> ( TRCs and uncleared effects)	1.2	1.3	1.2	1.2	1.2	0.7	1.3	1.2	1.3	1.3	1.3	1.2	1.2
Total Domestic Debt <sup>\3</sup>	3,003.7	3,040.4	3,070.2	3,119.4	3,153.1	3,177.9	3,273.6	3,402.5	3,457.1	3,457.6	3,482.7	3,488.5	3,532.6

<sup>\1</sup>The stock of Treasury bills includes Repo Treasury bills.

<sup>\2</sup> Other domestic debt includes Items in transit, securities re-discounted and Tax Reserve Certificates (TRCs) .

<sup>\3</sup> Gross domestic debt excludes IMF funds on-lent by CBK to Government, which are accounted for under External Debt.

**Source: Central Bank of Kenya**

## 8. CAPITAL MARKETS INDICATORS

**Table 8.1: Selected Equity Market Indicators**

INDICATOR	Jan-20	Feb-20	Mar-20	Apr-20	May-20	Jun-20	Jul-20	Aug-20	Sep-20	Oct-20	Nov-20	Dec-20	Jan-21
NASI (2008=100) Points	162.09	148.6	131.92	139.69	137.13	137.68	133.23	139.68	139.89	140.04	145.20	152.11	155.59
NSE 25 Share Index	4023.35	3662.74	3,109.00	3292.64	3203.94	3217.11	3059.56	3223.79	3258.78	3170.87	3264.15	3415.24	3434.52
NSE 20 Share Index (1966=100) Points	2600.41	2337.03	1966.12	1958.07	1948.08	1942.12	1804.1	1794.85	1852.29	1783.68	1759.93	1868.39	1881.91
Number of Shares Traded (Million)	336.00	385.15	639.33	439.03	430.26	552.55	517.07	470.56	524.53	219.42	381.00	369.13	294.00
Equities Turnover (KSh Million)	12,336.19	12,265.15	19,092.00	12,659.61	14,573.20	12,301.61	13,469.60	10,543.37	13,923.59	5,880.91	11,393.00	10,236.93	8,851.56
Market Capitalization (KSh Billion)	2,473.87	2,267.61	2,016.06	2,135.01	2,095.92	2,105.36	2,036.04	2,144.43	2,147.74	2,150.06	2,229.00	2,336.70	2,390.29
NASI - Nairobi all share index.													

NSE 25 Share Index - Weighted Price Index calculated as a mean of the shares of 25 public listed companies, selected based on a weighted market performance.

NSE 20 Share Index - Weighted Price Index calculated as a mean of the shares of 20 public, listed companies, selected based on a weighted market performance.

**Source: Nairobi Securities Exchange**

## CAPITAL MARKETS INDICATORS

Table 8.2: Selected Bond Market Indicators

Period (Month)	Secondary Market									Primary Market			
	FTSE NSE Kenya Govt. Bond Index	Bond Volume (KSh Million)	Number of Deals	7-Year Euro-bond Yield (%)	10-Year Euro-bond Yield (%)	10-Year Euro-bond (2028) Yield (%)	12-Year Euro-bond Yield (%)	30-Year Euro-bond Yield (%)	Most Traded	End Month Govt Bonds Turnover Ratio (Percent)	Bond	Offer (KSh Million)	Subscription Rate (Percent)
<b>2019</b>													
July	98.27	91,665.94	927	6.10	5.07	6.46	7.10	7.88	FXD1/2012/015	4.99	FXD3/2019/15	40,000	216.69
August	98.34	44,224.31	754	6.14	5.21	6.55	7.29	7.97	FXD3/2019/015	2.46	FXD 3/2019/10 & FXD1/2019/20	50,000	134.88
September	98.30	49,549.84	730	6.41	5.56	6.72	7.43	8.08	FXD3/2019/010	2.71	FXD1/2018/15 & FXD2/2019/15	50,000	65.25
October	98.24	36,811.71	588	6.22	5.37	6.40	7.16	7.83	IFB1/2019/016	1.93	IFB1/2019/16	60,000	144.91
November	98.00	51,416.36	1181	6.28	5.37	6.65	7.44	8.14	IFB1/2019/016	1.47	FXD4/2019/10	50,000	76.75
											FXD4/2019/10 (Tap Sale)	21,650	12.28
December	97.50	18,229.79	532	5.60	4.84	5.90	6.88	7.65	FXD3/2019/015	1.46	FXD3/2019/5	25,000	113.87
											FXD3/2019/6 (Tap Sale)	9,720	11.49
<b>2020</b>													
January	97.21	38,900.33	712	5.65	4.74	6.01	6.89	7.59	IFB1/2019/016	1.89	FXD1/2018/25 (Tap Sale), FXD2/2013/15 & FXD1/2018/20 (Re-open)	50,000	139.88
February	97.00	50,349.99	948	6.01	5.10	6.23	6.94	7.65	IFB1/2019/016	2.44	FXD1/2020/15 & FXD1/2018/25	50,000	84.99
March	96.40	68,734.89	1,222	8.78	8.26	8.57	9.08	9.03	FXD1/2019/010	3.30	FXD1/2018/20 & FXD1/2018/25	50,000	70.31
April	96.69	30,549.27	647	9.27	9.67	9.23	9.66	9.52	FXD1/2018/025	1.46	IFB1/2020/9 & IFB1/2020/9 (Tap Sale)	81,000	114.02
May	96.80	47,152.10	1,004	8.12	8.05	8.18	8.76	8.88	IFB1/2020/009	2.17	FXD1/2020/5 (Re-open) & FXD1/2020/5	29,735	68.83
June	96.65	58,949.92	1,376	7.30	6.48	7.51	8.21	8.41	IFB1/2020/009	2.45	FXD3/2019/5 & FXD4/2019/10	40,000	262.84
											IFB1/2020/6	25,600	82.67
July	97.65	69,993.89	1,073	7.37	6.39	7.49	8.19	8.45	IFB1/2020/009	3.27	FXD1/2020/5&FXD2/2018/10&FXD1/2019/5	60,000	302.95
August	97.67	70,462.01	1,203	6.95	6.02	7.08	7.63	8.20	IFB1/2020/011	2.91	FXD2/2018/20 (Tap Sale) & IFB1/2020/11	110,000	144.96
September	97.69	87,406.25	1,882	7.44	6.37	7.49	8.19	8.67	IFB1/2020/011	3.53	FXD2/2010/15&FXD1/2020/15&FXD1/2011/20	50,000	163.35
October	98.01	62,672.73	1,356	6.19	5.12	6.62	7.34	8.16	IFB1/2020/011	2.50	FXD1/2011/20&FXD1/2018/25	50,000	138.27
November	98.00	48,524.72	1,222	5.21	4.42	5.61	6.16	7.24	IFB1/2020/011	1.91	FXD1/2018/25 (Tap Sale), FXD2/2013/15 & FXD1/2018/20 (Re-open)	60,000	106.57
December	98.24	45,520.00	1,459	4.86	4.03	5.24	5.90	7.06	FXD1/2018/025	2.26	FXD1/2012/15 & FXD2/2019/15 (Tap Sale), FXD1/2012/15 & FXD2/2019/15 (Re-open)	62,000	55.40
<b>2021</b>													
January	97.90	54,414.45	2,070	4.78	3.60	5.26	6.04	7.16	IFB1/2021/016	2.04	FXD1/2021/002 & IFB1/2021/16	75,000	248.83

Reopened Bond - Issued and outstanding bond re-offered to the primary market at the current market yields

Bonds Turnover (Percent) - Volume of bonds traded as a ratio of the total outstanding volume of tradeable bonds

Tap Sale - Issued at their original face value, maturity and coupon rate, and sold at the weighted average yield in the last auction of the same bond

Source: Nairobi Securities Exchange and Central Bank of Kenya

## CAPITAL MARKETS INDICATORS

**Table 8.3: Foreign Investors Participation (KSh Millions)**

Period (Month)	A Foreign Purchases (FP)	B Foreign Sales (FS)	C Equity Market Turnover (ET)	D=A/C FP to ET in Percent	E=B/C FS to ET in Percent	F=(D+E)/2 Average Foreign Participation to Equity Turnover in Percent
<b>2018</b>						
January	13,813	15,277	20,340	67.91	75.11	71.51
February	6,324	11,462	17,920	35.29	63.96	49.63
March	10,927	12,410	22,890	47.74	54.22	50.98
April	8,673	10,488	15,076	57.53	69.57	63.55
May	7,700	11,722	18,377	41.90	63.79	52.84
June	8,244	10,583	13,688	60.23	77.32	68.77
July	5,535	7,646	9,736	56.85	78.53	67.69
August	5,571	7,136	10,243	54.39	69.67	62.03
September	6,229	9,258	11,950	52.13	77.47	64.80
October	10,547	14,834	16,890	62.45	87.83	75.14
November	7,900	8,499	10,713	73.74	79.33	76.54
December	4,876	6,661	7,830	62.27	85.07	73.67
<b>2019</b>						
January	12,532	13,889	16,200	77.36	85.73	81.55
February	10,366	10,150	14,173	73.14	71.62	72.38
March	12,141	10,399	15,917	76.28	65.33	70.81
April	7,524	7,431	9,865	76.27	75.33	75.80
May	9,008	6,843	12,494	72.10	54.77	63.43
June	7,364	8,265	10,538	69.88	78.42	74.15
July	6,625	8,698	11,453	57.84	75.94	66.89
August	6,146	4,637	8,652	71.03	53.59	62.31
September	7,345	6,518	10,558	69.57	61.74	65.65
October	9,618	10,979	16,019	60.04	68.54	64.50
November	9,162	9,891	17,021	53.82	58.11	55.97
December	8,835	7,588	11,966	73.84	63.42	68.63
<b>2020</b>						
January	7,741	7,211	12,336	62.75	58.46	60.60
February	6,376	9,031	12,265	51.98	73.63	62.81
March	6,929	15,987	19,092	36.29	83.73	60.01
April	6,174	10,272	12,660	48.77	81.14	64.96
May	7,297	11,759	14,573	50.07	80.69	65.38
June	6,958	8,648	12,302	56.56	70.30	63.43
July	5,496	10,835	13,470	40.80	80.44	60.62
August	6,873	6,863	10,543	65.19	65.09	65.14
September	10,921	10,119	13,924	78.43	72.67	75.55
October	3,444	4,573	5,881	58.57	77.76	68.16
November	7,150	8,336	11,393	62.76	73.17	67.97
December	6,149	6,503	10,237	60.07	63.52	61.79
<b>2021</b>						
January	5,869	5,248	8,852	66.30	59.29	62.79

Source: Nairobi Securities Exchange





**Central Bank of Kenya**

*Haile Selassie Avenue P.O. Box 60000 - 00200 Nairobi | Tel: (+254) 20 - 286 0000 / 286 1000 / 286 3000*